

SUPER A
SCIENTIFIC

BIOLOGY

www.super-a-scientific.com

sales@super-a-scientific.com

Table of Contents

Anatomy	5	42cm 13-pc Female Torso Model XC-202B	9
Human Joint Model.....	5	26cm 15-pc Torso Model XC-203	9
Life-sized Hip Joint Model XC-110	5	85cm 23-pc Male/female Changeable Torso Model XC-204	10
Life –sized Knee Joint Model XC-111	5	45cm 23-pc Male/female Changeable Torso Model XC-205	10
Life –sized Elbow Joint Model XC-112	5	Human Male Pelvis Section Model XC-331B.....	10
Life –sized Foot Joint Model XC-113	5	Human Female Pelvis Section Model XC-332B	10
Life –sized hand Joint Model XC-114	5	Skeleton Model	10
Life –sized Pelvis Joint Model XC-115A.....	6	Skull Model 1390	10
Human Organ Model.....	6	Life –sized Skeleton Model 170cm Tall XC-101	10
Life-sized Brain Model GD0303D62	6	Medium Skeleton Model 85cm Tall XC-102	11
Life –sized Brain Model XC-308	6	85CM Skeleton Model with Spinal Nerves XC-102A	11
Life –sized Brain Model XC-304	6	85CM Skeleton Model with Nerves and Blood Vessels XC-102B.....	11
Giant hands-on Eye Ball Model GD0307A052	6	Mini Skeleton Model 42cm Tall XC-103	11
Human Eye Model GD0307D000	6	Botanical Model	12
Human Eye Model GD0308D010	6	Monocot Stem Model 1392	12
Human Eye Model XC316	7	Dicot Stem Model 1393	12
Human Ear Model GD0309C004	7	Leaf Structure Model M15206.....	12
Human Ear Model GD0309D106.....	7	Budget Giant Flower Dicot Model M152071	12
Expansion Model of Human Teeth XC-305	7	Biotechnology	13
Human Teeth Model XC-403.....	7	Fixed Volume Micro Pipette YY-G	13
Lung Demo	8	Continuous Adjustable Micro Pipette QY	13
Stomach Model XC-306	8	Adjustable Volume Micro Pipette QYQ	14
Jumbo Heart Model XC307A.....	8	Continuous Adjustable Micro Pipette YY.....	14
Kidney Model XC-310-1	8	Dissecting Instruments	15
Liver, Pancreas and Duodenum Model XC-311	8	Centrifuge Machine 306	15
Larynx, Heart and Lung model XC-320.....	8	Centrifuge Machine MS628 A, B.....	15
Enlarged Skin Model XC-313	9	Centrifuge Machine 306-1	15
Human Torso Model	9	Dissecting Pan 350	15
85cm 19-pc Male Torso Model XC-201.....	9	Dissecting Pan Lid 350-LD	15
42cm 13-pc Male Torso Model XC-202A	9		

Biology

Teasing Needle 390	15	Preserved Materials	19
Apron – Rubberized Cloth 1050	15	Animal Specimen Mount.....	19
Forceps 23101	15	Life Cycle of Butterfly, Preserved Specimen T102.....	19
Plastic Forceps P23107	15	Butterfly, Mounted Specimen T207-1	19
Plastic Forceps P23108	16	Grasshopper Development, Mounted Specimen T104	19
Cryovial Tube KJ317-319.....	16	Honey Bee Life History, Mounted Specimen T105	19
Micro Centrifuge Tube KJ315-316	16	House Fly Life History, Mounted Specimen T106.....	19
Dissecting Instruments Set MS703	16	Pigeon Dissection, Mounted Specimen T107	19
Physiology.....	16	Frog Development, Mounted Specimen T108	20
Aneroid Sphygmomanometer.....	16	Frog Dissection, Mounted Specimen T109.....	20
Aneroid Sphygmomanometer 1371	16	Fish Dissection, Mounted Specimen T111.....	20
Aneroid Sphygmomanometer with Stethoscope KTJ-50.....	16	Basic Confirmation of Insect, Mounted Specimen T201	20
Sphygmomanometer TXJ-10.....	16	Bat Skeleton, Preserved specimen T303	20
Blood Pressure Monitor	17	Silkworm Life Cycle, Mounted Specimen T305	20
Arm Semi-Automatic Electronic Blood Pressure Monitor DXJ-220	17	Centipede Millipede, Preserved Specimen T405.....	20
Arm Automatic Electronic Blood Pressure Monitor DXJ-310	17	Snake, Preserved Specimen T406.....	20
Arm Automatic Electronic Blood Pressure Monitor DXJ-330	17	Snake Head, Mounted Specimen T407.....	20
Wrist Automatic Electronic Blood Pressure Monitor DXJ-610	17	Hop Toad, Mounted Specimen T410	20
Clinic Thermometer	18	Octopus, Mounted Specimen T415	21
Stethoscope.....	18	Annelid, Preserved Specimen T501	21
Stethoscope 7-11375	18	Ascaris Male and Female, Preserved Specimen T503	21
Bowle’s Stethoscope 1872.....	18	Comparative Hearts, Mounted Specimen T602	21
Teaching Stethoscope KTJ-30DE	18	Comparative Brains, Mounted Specimen T603.....	21
Disposable Plastic Stethoscope KTJ-30NPS.....	18	Insect, Mounted Specimen T20109.....	21
Lung Demonstrator	18	Insect, Mounted Specimen T20123.....	21
Lung Apparatus, Plastic 1203.....	18	Insect, Mounted Specimen T20125.....	21
Lung Apparatus, Plastic, Black	19	Insect, Mounted Specimen T20126.....	21
		Crab, Preserved T20233	22
		Plant Specimen Mount	22
		Bean Germination, Mounted Specimen T110	22
		Root Systems, Mounted Specimen T701.....	22
		Corn Germination, Mounted Specimen T702.....	22

Biology

Phyllotaxy, Mounted Specimen T703	22
Plants 4-pc set, mounted Specimen T704	22
Mineral Rocks, Mounted Specimen T801	22
Metallic Mineral, Mounted Specimen T802	22
Specimen Mount Set.....	22
Science Specimens 900 – 904	22
Spiders and Scorpion Set T203	23
16-pc/box Mounted Specimen Set T204	23
27-pc/box Mounted Specimen Set T205	23
30-pc/box Mounted Specimen Set T206	23
10-pc/box Mounted Specimen Set T209	23
10-pc/box Mounted Specimen Set T210	23
10-pc/box Mounted Specimen Set T211	23
Supplemental Items	24
Bug Viewer 1017	24
Fancy Bug Viewer YJ7129A	34
Apron – Rubberized Cloth 1050	24
Bug Viewer YJ7036C.....	24
Mini Bug Viewer YJ7105.....	24
Fancy Bug Viewer YJ7129B.....	24
Disposable Petri Dish 1177P	24
Glass Eye Dropper 1300-4A.....	24
Bare-Handed Microtome MS704	24
Insect Net 1402	24
Insect Net 502	25
Magnifier	25
Wood Splints 2306-PK.....	25
Sample Vials Materials 3000-VC	25
Pinning Block 23456.....	25
Pocket Loupe YJ7058B	25

Anatomy

Human Joint Model



**Life-sized Hip Joint Model
XC-110**

Demonstrates anteversion, retroversion, abduction and internal / external rotation. Including flexible, artificial ligaments. Life-size, on stand. Size: 25x19x30CM



**Life-sized Knee Joint Model
XC-111**

Demonstrates flexion, extension and internal / external rotation. Including flexible, artificial ligaments. Life-size, on stand. Size: 17x14.5x29.5CM.



**Life-sized Elbow Joint Model
XC-112**

Demonstrates flexion, extension and internal / external rotation of the radius. Including flexible, artificial ligaments. Life-size, on stand. Size: 17x14.5x24CM.



**Life-sized Foot Joint Model
XC-113**

Demonstrate all of foot functionality and the external anatomical structures. Made of PVC plastic. Natural size.



**Life-size Hand Joint Model
XC-114**

Demonstrate all of hand functionality and the external anatomical structures. Made of PVC plastic, natural size.

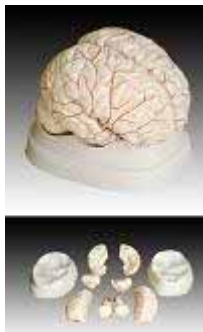


Half-size Pelvis with 5pcs Lumbar Model XC-115A
vertebrae. Mounted on a heavy cast iron bases for stability. Comes with a detailed key.

Human Organ Model



Life-sized brain model GD0303D62
Demonstrates sensory/motor functions of the brain. Normal right half brain features: frontal, parietal, occipital, and temporal lobes; cerebellum; interthalamic adhesion; corpus callosum; pons; midbrain-central peduncle; olfactory bulb; optic nerve; optic chiasm; mammillary body; and medulla oblongata.
Model size: 6-1/2" x 5" x 2-1/2".



Life-sized brain model XC-308
This model facilitates the medical students to get a correct understanding of the external features of the brain and its arterial supply as a whole, as well as the relations between their component portions.
External features of the brain: cerebral hemisphere, brain stem, cerebellum.
The arterial supply of the brain: sources, vertebral, internal carotid arteries, arteries supply of the cerebellum and cerebrum.
Made of PVC and can be separated into 8 pcs mounted on base
Model size: 18.5x14x13.5CM.



Life-sized brain model XC-304
This plastic replica human brain shows multiple views. Great for hands-on study of brain anatomy. On base. Dissectible into 3 pcs.
Model Size: 18.5x14x13.5CM.



Giant hands-on eye ball model GD0307A052
Six times larger than life, with five detachable parts, it's plain to see why this giant, take-apart eye generates such student enthusiasm, providing both visual and tactile stimuli. 19 principal features. Mounted on a tip-proof wooden base
Model size 6" x 6" x 6".



Human eye model GD0307D000
Enlarged approximately three times. Dissectible into six parts. 6" H x 4" W x 4" D on stand.
Teacher's guide included.



Human eye model GD0308D010
Oversized fully assembled model with cut-away to show inner anatomy. Lens and cornea are removable. 3-3/4" x 2-1/2" x 2-3/4" without base.
Card size: 6-1/2" x 5-1/4".



Giant eye model XC-316

The different parts of the eyeball model are detachable to show the following structures.

1. Tunica external: showing cornea and sclera with attachments of ocular muscles and optic nerve.
2. Tunica media: showing the iris, the ciliary body and the chorioid.
3. Tunica internal is retina.
4. Refraction media: showing the lens and the vitreous body.

The model is made of PVC.
6 times enlarged. Size: 15.5cm



Human ear mode GD0309C004

Enlarged approximately three times. Dissectible into four parts. Removable ear ossicles with dissectible cochlea.

Size: 13-1/3" x 6-1/4" x 7-2/5" on base.



Human ear model GD0309D106

Fully assembled, full size model shows canal and inner ear mechanisms.

Size: 3-3/4" x 2-1/2" x 2-3/4"



Giant ear model XC-303C

A giant model of the ear, for elementary science classes, shows the three main structural parts of the hearing organ (external ear, middle ear, internal ear) and the position of the equilibrium organ of human body.



1. External ear: Showing the shape of the auricle and the primary features of the external auditory meatus.
2. Middle ear: showing the tympanic membrane, the three auditory ossicles (hammer, anvil, stirrup) and the Eustachian tube.
3. Internal ear: showing the vestibule, cochlea and the three semicircular canals of the osseous labyrinth.

This model is dissected into 6 parts. 5 times enlarged. Mounted on plastic base.
Size: 43x25x15CM.

Expansion model of human teeth XC-305

This model shows the morphological differences of the incisor, canine and molar teeth. Dissections of the canine and molar teeth demonstrate the structure of the enamel, dental pulp cavity. It is intended for middle schools.

Made of PVC. 3pcs/set. 12 times enlarged.

Human teeth model XC-403

This model is to serve for demonstration in mouth protection and relative clinical teaching.

This model consists of gum, teeth, tongue and palate.

It demonstrates teeth form and oral cavity cleaning and protection.



Lung Demo

Show how the lungs are emptied and filled with air by relaxation and contraction of the diaphragm muscle! Two balloons attached to a Y-tube simulate the lungs; the chest cavity is a half-gallon plastic bell jar with open top and stout rubber sheet which acts as the diaphragm. As the diaphragm is pulled downward, the atmospheric pressure is lowered inside the chamber causing the lungs to expand, taking in air. When the diaphragm is released the lungs deflate.

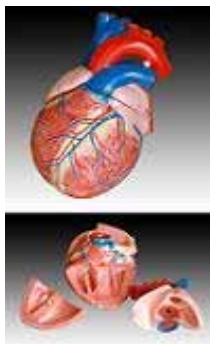
Size: 17x17x20cm



Stomach mode

XC-306

This model shows the morphology of the stomach in a moderate distended state. With the longitudinal section, the model shows the structures of the gastric folds, pyloric valve, pyloric sphincter muscles, gastric mucosa and the transitional mucosa of the gastric-esophagus. Made of hard plastic, 2 times the natural size



Life-sized heart model

XC-307A

This life-size heart model excellent for patient education or elementary science classes. Anatomically accurate and great for learning basic external and internal anatomy of the heart. Dissectible into 2 pcs. Made of PVC and mounted on plastic base.

Size: 15x8x9CM.



Kidney model (1 part)

XC-310-1

The coronary section of the right kidney shows the renal hilum, renal blood vessels, ureter, renal pelvis of the kidney, the renal substance is demonstrated by its medulla and cortex, medullary pyramid, papillae etc.

Made of PVC plastic. 2 times enlarged.

Mounted on a plastic stand.

Size: 20x10x7CM.



Liver, pancreas and duodenum model

XC-311

An economical way to study the basic structures of the liver, spleen, blood vessels and pancreas.

External structures are illustrated as well as the pancreatic duct of the pancreas. This model also shows the abdominal aorta and inferior vena cava.

Life-size. Can be disassembled into 3 parts.

Made of PVC.

Size: 23x12.5x26.5CM



Larynx, heart and lung model

XC-320

Life-sized model separates 7 parts. The lungs have two removable lobes to show the internal structures, the heart bisects showing atria, ventricles and valves, the larynx bisects and the diaphragm is shown.

Size: 36x23x12CM.



Enlarged skin model

XC-313

A greatly enlarged (105 times) cross sectional view of the human skin showing three layers and a close-up view of a hair follicle, sweat gland, fatty tissue and more. Front, side and back view. Not dissectible.

The model shows the structures of the human scalp as follows:

1. Structure of the skin: epidermis, dermis, hypodermis.
2. Appendages of the skin : the sweat glands, the sebaceous glands, the hairs.
3. Blood vessels and nerves of the skin.

Mounted on a plastic base.

Size: 27x10x31CM

Human Torso Model



85cm 19-pc Male Torso Model

XC-201

This is a full-size male torso. Hand painted and meticulously assembled to simulate human anatomy. Dissectible into 19 parts: torso, head (2 pcs), brain, lung (4 pcs), heart, trachea, esophagus and descending aorta, diaphragm, stomach, duodenum with pancreas and spleen, intestines, kidney, bladder (2 pcs) and liver.

Made of PVC plastic.

Mounted on plastic base.

Size: 85CM



42cm 13-pc Male Torso Model

XC-202A

This model including 13 dissectible parts: torso, head (2 pcs), brain, lung (2 pcs), heart (2 pcs), stomach, liver, kidney, pancreas and spleen, intestine.

Made of PVC plastic.

Mounted on plastic base.

Size: 42CM



42cm 13-pc Female Torso Model

XC-202B

This is a female torso including 15 dissectible parts: torso, head (2 pcs), brain, lung (2 pcs), heart (2 pcs), stomach, liver, kidney, pancreas and spleen, intestine.

Made of PVC plastic.

Mounted on plastic base. Size: 42CM



26cm 15-pc Torso Model

XC-203

This most popular educational torso features: torso, brain (2 pcs), cut calvarium, heart, lung (4 pcs), stomach, diaphragm, liver, heart, trachea & esophagus & aorta, pancreas and spleen, intestine etc. Dissectible into 15 pcs.

Made from PVC plastic

Size: 26CM



85cm 23-pc Male/female changeable torso model

XC-204

This outstanding torso features an exposed spine with removable vertebra and spinal cord segments, a female breast plate and interchangeable male and female genitalia. The female organs include a fetus in the womb. Dissectible into 23 parts: torso, female breast plate, head, eyeball, brain, vertebra spinal nerves, lung (2 pcs), heart (2 pcs), liver, kidney, stomach (2 pcs), intestines (4 pcs), male genitalia (2 pcs), female genitalia with fetus (3 pcs).

Made of PVC plastic.

Mounted on a plastic base.

Size: 85CM.



45cm 23-pc Male/female changeable torso model

XC-205

This half-sized torso offers an outstanding educational value. Dissectible into 23 parts: torso, female breast plate, head, eyeball, brain, vertebra spinal nerves, lung (2 pcs), heart (2 pcs), liver, kidney, stomach (2 pcs), intestines (4 pcs), male genitalia (2 pcs), female genitalia with fetus (3 pcs).

Made of PVC plastic.

Mounted on plastic base.

Size: 45CM



Human Male Pelvis Section Model

XC-331B

This median section model shows the normal position of male genital organs with bladder and rectum in the male pelvis. 2-pc set

Made from PVC plastic



Human Female Pelvis Section Model

XC-332B

This model is a median section shows female genital organs with bladder and rectum. The abdominal and pelvis muscles are shown detailed. 4-pc set

Made from PVC plastic.

Skeleton Model



Plastic Skull Model

1391

This detailed Human Skull Model is great for all ages! The life-sized model features a spring mounted mandible and a detachable skull. Included is a detailed key.



Life-sized Skeleton Model 170cm Tall

XC-101

This economical, life-size articulated adult plastic skeleton is ideal for teaching the basics of human anatomy. The arms and legs are removable for study. Features nerve branches, vertebral artery and herniated lumbar disc. Skull includes movable jaw, cut calvarium, suture lines and 3 removable lower teeth. Mounted on a sturdy 16" wide metal base.

Made of washable and unbreakable PVC plastic.

Size: 170CM.



**Medium Skeleton Model 85cm Tall
XC-102**

An economical teaching skeleton with full natural movement and a user-friendly personality that will encourage children to learn the names of the bones, with details to satisfy students, doctors or anyone interested in the human skeleton. Removable calvarium. Mounted on an iron metal stand. Size: 85CM.



**85CM Skeleton Model with Nerves and
Blood Vessels**

XC-102B

This model depicts the position, course and distribution of main arteries and peripheral nerves of the human body. It may be employed as a visual aid in the instruction of anatomy to the students of medicine. Made of PVC material. Size: 85CM



**85CM Skeleton Model with Nerves and
Blood Vessels**

XC-102B

This model depicts the position, course and distribution of main arteries and peripheral nerves of the human body. It may be employed as a visual aid in the instruction of anatomy to the students of medicine. Made of PVC material. Size: 85CM



Mini Skeleton Model 42cm Tall

XC-103

This most popular miniature skeleton model offers an unique hands-on learning experience for young scientists, curious kids or medical professionals. Special features include a movable jaw on springs, a skull whose top half opens for a look inside, arms and legs that are removable for individual study. Made of washable and unbreakable PVC plastic. Iron stand included. Size: 42CM.

Botanical Model



Monocot Stem Model 1392

This plant anatomy model features the cuticle layer, epidermis, closed vascular bundles, parenchymatous tissue and several others.



Dicot Stem Model 1393

This unit is modeled after a sunflower and shows the epidermis, cork layer, phloem region, cambium, xylem region, pith, and other vital structures. This model displays anatomy in cross, radial, and tangential sections. Comes with a detailed key.



Leaf Structure Model M15206

Magnified 45 times from a lima bean leaf. This model vividly shows the transverse and longitudinal sections, as well as the upper and lower surfaces of a typical leaf. The mesophyll includes palisade parenchyma and spongy parenchyma. Both surfaces are shown with stomata and guard cells. Also shown is the detail of vascular bundles, such as xylem, phloem, and the veins. Complete with key. Plastic construction.



Budget Giant Flower Dicot Model M152071

As students explore this greatly enlarged, unbreakable vinyl model, they'll discover the arrangement of floral components, and the reproductive function of flowers. Since the petals, sepals, and stamens are detachable, students can begin the investigation with the model disassembled and build the flower as they learn about its parts and their functions. Floral structures are number-coded for identification in the key which accompanies the model.

Biotechnology

Fixed Volume Micro Pipette

Comfortable hand holding, easy to read, chemical resistant and heat resistant.



Item #	Volume (ul)
YY-2-G	2
YY-5-G	5
YY-10-G	10
YY-20-G	20
YY-25-G	25
YY-50-G	50
YY-100-G	100
YY-200-G	200
YY-250-G	250
YY-300-G	300
YY-400-G	400
YY-500-G	500
YY-1000-G	1000
YY-2000_G	2000
YY-2500-G	2500
YY-5000-G	5000



Continuous Adjustable Micro Pipette

Comfortable hand holding, easy to read.

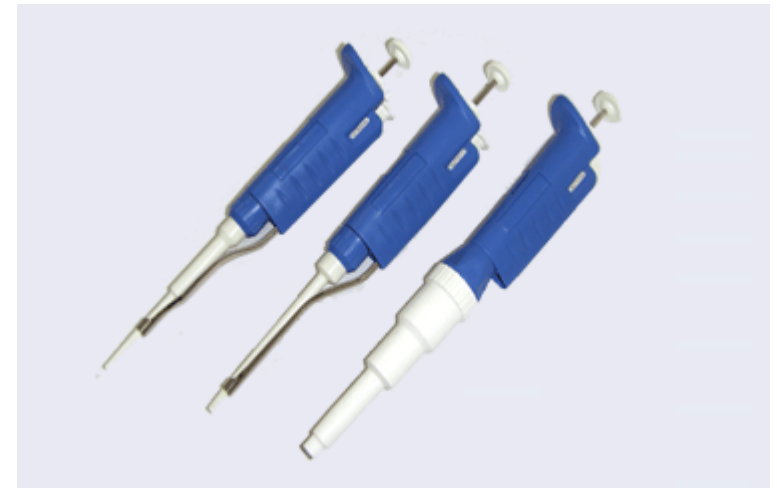
Item #	Volume (ul)	Minimum Increment(ul)
QY-2	0.1 — 2	0.02
QY-10	0.5 — 10	0.02
QY-20A	2 — 20	0.02
QY-50	5 — 50	0.02
QY-100	10 — 100	0.2
QY-200A	20 — 200	0.2
QY-1000A	100 — 1000	2
QY-5000A	500 — 5000	2
QY-5000B	500 — 5000	



Adjustable Volume Micro Pipette

Comfortable hand holding, easy to read, chemical resistant and heat resistant.

Item #	Volume (ul)	Minimum Increment(ul)
QYQ-2	0.1 — 2	0.002
QYQ-10	0.5 — 10	0.02
QYQ-20	2 — 20	0.02
QYQ-50	5 — 50	0.02
QYQ-100	10 — 100	0.2
QYQ-200	20 — 200	0.2
QYQ-1000	100 — 1000	2
QYQ-5000	500 — 5000	2



Continuous Adjustable Micro Pipette

Comfortable hand holding, easy to read, chemical resistant.

Item #	Volume (ul)	Minimum Increment(ul)
YY-2	0.1 — 2	0.002
YY-10	1 — 10	0.02
YY-20	2 — 20	0.02
YY-50	5 — 50	0.2
YY-100	10 — 100	0.2
YY-200	20 — 200	0.2
YY-1000	100 — 1000	2
YY-5000	500 — 5000	2

Dissecting Instruments



Centrifuge Machine

306

Hand Powered

This centrifuge machine is equipped with a clamp for mounting to a table 1 to 4 cm thick. Made from enamel coated cast metal. Holds centrifuge tubes up to 15ml in capacity. The unit is approximately 30cm tall.



Centrifuge Machine

MS628 A, B

Hand Powered

This centrifuge machine is equipped with a clamp for mounting to a table 1 to 4 cm thick. Made from enamel coated cast metal. Holds centrifuge tubes up to 15ml in capacity. The unit is approximately 30cm tall.



Dissecting Pan

350 Dissecting Pan, Aluminum with Wax.

Size: 11" x 7" x 1-1/2"

350-1 Dissecting Pan, Aluminum without Wax.

Size: 11" x 7" x 1-1/2"

355-1 Dissecting Pan, Aluminum without Wax.

Size: 13" x 9" x 2"



Dissecting Pan Lid

350-LD

Made to cover standard 11" x 7" dissection pans. The clear cover offers a way to enclose your dissecting project between classes. A built in recession in the top allows for secure stacking of multiple pans.

Maxed.



Teasing Needles

Durable, light weight wooden handles. The pin points allow for accurate results.

390 Teasing needle, straight, wood handle, 12pc/pk

391 Teasing needle, curved, wood handle, 12pc/pk



Apron - Rubberized Cloth

These aprons are made of a chemical resistant PVC coated cloth which stays flexible. There is reinforcement at the points of strain.

1050 Apron Size: 36" x 27"

1051 Apron Size: 42" x 27"

1052 Apron Size: 42" x 36"

1053 Apron Size: 46" x 36"



Forceps

23101

This is an excellent student forceps for basic dissection applications. It is nickel-plated steel with a medium point. 4.5".



Forceps

23102

This inexpensive forceps is ideal for basic dissection or for kits. Made of nickel plated steel. 4".



Plastic Forceps P23107

4", pointed, yellow

These plastic forceps are excellent for basic dissection or general classroom applications.



Plastic Forceps P23108

4", blunt, yellow

These plastic forceps are excellent for basic dissection or general classroom applications.



Cryovial Tube KJ317-319



Micro Centrifuge Tube KJ315-316-2 with color Cap



MS703 Dissecting Instruments Set

Made of high quality steel materials, consists of 7 pieces.

Physiology

Aneroid Sphygmomanometer



Aneroid Sphygmomanometer 1371

Used for measuring blood pressure, this device is individually certified for accuracy. 300mm scale. Inflation system is made of seamless, reinforced latex rubber.



Aneroid Sphygmomanometer with Stethoscope KTJ-50

High quality aneroid sphygmomanometer
Features: Non - stop pin design
Range: 0 - 300 mm Hg
Cuff material: Nylon (Cotton)
Cuff sizes: Adult (22-28cm),
Obese (30 - 38cm)



TYPE Sphygmomanometer TXJ-10

This traditional Sphygmomanometer is for the examination of blood pressure. Built in mercury reservoir valve, measuring in mmHg and KPa with cast aluminum case.

Blood Pressure Monitor

DXJ-220 Arm-Type Semi-Automatic Electronic Blood Pressure Monitor

Display system: LCD
Measuring method: Oscillometric method
Atmospheric pressure range: 0 - 300mmHg
Measuring range: 40 - 240mmHg
Pulse rate range: 40 - 160/min
Measuring accuracy: Atmospheric pressure $\pm 0.4\text{Kpa}$ ($\pm 3\text{mmHg}$)
Pulse rate accuracy: Within $\pm 5\%$
Pressurization: manual inflation
Deflation: automatic exhaust
Pressure measuring: silicon integrated pressure sensor. Memory: seven groups
Power source: four festivals of 1.5V, AA battery.
Arm belt: arm beleaguer 22 -33cm



DXJ-310 Arm-Type Fully Automatic Electronic Blood Pressure Monitor

Display system: LCD
Measuring method: Oscillometric method
Atmospheric pressure range: 0~300mmHg
Measuring range: 40mmHg—240mmHg
Pulse rate range: 40—160/min
Measuring accuracy: $\pm 0.4\text{Kpa}$ ($\pm 3\text{mmHg}$)
Pulse rate accuracy: Within $\pm 5\%$
Pressurization: automatic inflation
Deflation: automatic exhaust
Pressure measuring: silicon integrated pressure sensor
Memory: seven groups
Power source: four festivals of 1.5V, AA alkaline battery
Arm belt: arm beleaguer 22 ~ 33cm suitable



DXJ-330 Arm-Type Fully Automatic Electronic Blood Pressure Monitor

Display system: LCD
Measurement method: Oscillometric method
Pressure display range: 0 - 300mmHg
Measurement pressure: 40 - 240mmHg
Pulse rate: 40 - 160 Beats per minute
Accuracy: $\pm 0.4\text{Kpa}$ ($\pm 3\text{mmHg}$)
Pulse rate: Within $\pm 5\%$
Puff: Automatism puff
Deflate: Automatism exhaust
Pressure detect: Silicon sensor
Memory: One Seven groups memory
Power supply: Four(AAA)batteries
Operation range: Temperature 10 - 40°C
Humidity 30 - 75%RH
Pressure cuff: Fit for arm surround 22 - 33cm

DXJ-610 Wrist-Type Fully Automatic Electronic Blood Pressure Monitor

Display system: LCD
Measuring method: Oscillometric method
Atmospheric pressure range: 0~300mmHg
Pulse rate range: 40—160/min
Pulse rate accuracy: Within $\pm 5\%$
Pressurization: automatic inflation
Deflation: automatic exhaust
Pulse rate range: 40—160/min
Measuring accuracy $\pm 0.4\text{Kpa}$
Pressure measuring: silicon integrated pressure sensor
Memory: seven memory functions
Power source: two festivals AAA alkaline battery
Cuff size: 14~20cm



Clinic Thermometer



Digital Thermometer TDC-10

Stethoscope



Stethoscope

7-1375

Stethoscopes - An excellent choice for listening to heart and chest. Use these stethoscopes in combination with Aneroid Sphygmomanometer 7-1371 while working with blood pressure. Available in Red, Blue, Yellow, Green.



Bowe's Stethoscopes

1872

A standard medical stethoscope with flexible tubing and 1-3/4" chestpiece. The metal parts are chromium plated and non-magnetic.



Teaching Stethoscope

KTJ-30DE

Chrome plated adult dual head chest piece, binaural, model with PVC tubing with coordinated plastic retaining and non chill rings. Suitable for 2 persons use simultaneously.



Disposable Plastic Stethoscope

KTJ-30NPS

This is an economic type stethoscope. Made from plastic material.

Lung Demo



Lung Demo Apparatus, Plastic

1203

Show how the lungs are emptied and filled with air by relaxation and contraction of the diaphragm muscle! Two balloons attached to a Y-tube simulate the lungs; the chest cavity is a half-gallon plastic bell jar with open top and stout rubber sheet which acts as the diaphragm. As the diaphragm is pulled downward, the atmospheric pressure is lowered inside the chamber causing the lungs to expand, taking in air. When the diaphragm is released the lungs deflate.



Lung Demo Apparatus, Plastic – Black

Show how the lungs are emptied and filled with air by relaxation and contraction of the diaphragm muscle! Two balloons attached to a Y-tube simulate the lungs; the chest cavity is a half-gallon plastic bell jar with open top and stout rubber sheet which acts as the diaphragm. As the diaphragm is pulled downward, the atmospheric pressure is lowered inside the chamber causing the lungs to expand, taking in air. When the diaphragm is released the lungs deflate.

Preserved Materials

Animal Specimen Mount



Life Cycle of Butterfly, Preserved Specimen T102

With descriptions of main body gives students an up close study of life cycle of Butterfly encased in clear acrylic.
Size: 165x63x23mm



Butterfly, Mounted Specimen T207-1

With descriptions of main body gives students an up close study of Butterfly encased in clear acrylic.
Size: 75x75x25mm



Grasshopper Development, Mounted Specimen T104

Gives students an up close study of Grasshopper development encased in clear acrylic. A practical hands on way to explore and learn.
Size: 165x78x23mm



Honey Bee Life History, Mounted Specimen T105

Gives students an up close study of honey bee life history encased in clear acrylic. A practical hands on way to explore and learn.
Size: 88x58x22mm



House Fly Life History Mounted Specimen T106

Gives students an up close study of House fly life history encased in clear acrylic. A practical, hands on way to explore and learn.
Size: 88x58x22mm



Pigeon Dissection, Mounted Specimen

Gives students an up close study of pigeon dissection encased in clear acrylic. A practical, hands on way to explore and learn!
Size: 230x110x60mm



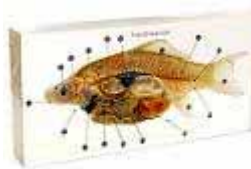
Frog Development, Mounted Specimen T108

Gives students an up close study of frog development encased in clear acrylic. A practical, hands on way to explore and learn!
Size: 135x74x22mm



Frog Dissection, Mounted Specimen T109

Gives students an up close study of Frog dissecting encased in clear acrylic. A practical, hands on way to explore and learn!
Size: 190x105x40mm



Fish Dissection, Mounted Specimen T111

Gives students an up close study of Fish dissection encased in clear acrylic. A practical, hands on way to explore and learn!
Size: 210x100x35mm



Basic Confirmation of Insect, Mounted Specimen T201

With descriptions of main body gives students an up close study of this unique creature encased in clear acrylic.
Size: 88x58x40mm



Bat Skeleton, Preserved Specimen T303

Gives students an up close study of Bat Skeleton encased in clear acrylic. A practical, hands on way to explore and learn.
Size: 140x96x35mm



Silkworm Life Cycle, Mounted Specimen T305

Gives students an up close study of Silkworm life cycle encased in clear acrylic. A practical, hands on way to explore and learn.
Size: 164x78x24mm



Centipede Millipede, Preserved Specimen T405

Give students an up close study of this unique creature encased in clear acrylic. A practical, hands on way to explore and learn!
Size: 167x78x24mm



Snake, Preserved Specimen T406

Gives students an up close study of snake encased in clear acrylic. A practical, hands on way to explore and learn!
Size: 160x50x22mm



Snake Head, Mounted Specimen T407

Gives students an up close study of two snake head difference encased in clear acrylic. A practical, hands on way to explore and learn!
Size: 128x45x55mm



Hop Toad, Mounted Specimen T410

Gives students an up close study of hop toad encased in clear acrylic. A practical, hands on way to explore and learn!
Size: 95x95x28mm



Octopus, Mounted Specimen

T415

Gives students an up close study of Octopus encased in clear acrylic. A practical, hands on way to explore and learn!

Size: 95x95x28mm



Mounted Specimen, Insect

T20109

Gives students an up close study of this unique creature encased in clear acrylic. A practical, hands on way to explore and learn!

Size: 73x41x24mm



Annelid, Preserved Specimen

T501

Gives students an up close study of Annelid encased in clear acrylic. A practical, hands on way to explore and learn!

Size: 118x62x22mm



Mounted Specimen, Insect

T20123

Gives students an up close study of this unique creature encased in clear acrylic. A practical, hands on way to explore and learn!

Size: 73x41x24mm



Ascaris Male and Female, Preserved Specimen

T503

Gives students an up close study of Ascaris Male and Female encased in clear acrylic. A practical, hands on way to explore and learn!

Size: 160x58x20mm



Comparative Hearts, Mounted Specimen

T602

Gives students an up close study of comparative hearts encased in clear acrylic. A practical, hands on way to explore and learn.

Size: 165x78x22mm



Comparative Brains, Mounted Specimen

T603

Gives students an up close study of comparative brains encased in clear acrylic. A practical, hands on way to explore and learn.

Size: 165x78x22mm



Mounted Specimen, Insect

T20125

Gives students an up close study of this unique creature encased in clear acrylic. A practical, hands on way to explore and learn!

Size: 73x41x24mm



Mounted Specimen, Insect

T20126

Gives students an up close study of this unique creature encased in clear acrylic. A practical, hands on way to explore and learn!

Size: 73x41x24mm



Crab, Preserved Specimen T20233

Gives students an up close study of this unique crab encased in clear acrylic. A practical, hands on way to explore and learn!
Size: 73x41x24mm

Plant Specimen Mount



Bean Germination, Mounted Specimen T110

The stages of seed germination in 3D-frozen in time in these beautiful mounted specimens, encased in clear acrylic. A practical, hands on way to explore and learn bean germination.
Size: 88x88x20mm



Root Systems, Mounted Specimen T701

Gives students an up close study of root systems encased in clear acrylic. A practical, hands on way to explore and learn.
Size: 88x58x22mm



Corn Germination, Mounted Specimen T702

See the stages of seed germination in 3D-frozen in time in these beautiful preserved specimens, encased in clear acrylic. A practical, hands on way to explore and learn.
Size: 164x78x24mm



Phyllotaxy, Mounted Specimen T703

Gives students an up close study of phyllotaxy encased in clear acrylic. A practical, hands on way to explore and learn.
Size: 118x61x22mm



Plants 4-pc set, Mounted Specimen T704

Gives students an up close study of 4 plants leaves encased in clear acrylic. A practical, hands on way to explore and learn.
Size: 73x41x24mm(3), 76x76x24(1)



Mineral Rock, Mounted Specimen T801

Gives students an up close study of these mineral rocks encased in clear acrylic. A practical, hands on way to explore and learn.
Size: 136x92x28mm



Metallic Mineral, Mounted Specimen T802

Gives students an up close study of the metallic mineral encased in clear acrylic. A practical hands on way to explore and learn.
Size: 150x130x30mm

Specimen Mount Set



Science Specimens 900 - 904

Each set includes 4 specimens permanently encased in indestructible, light weight acrylic.

900 Plants Specimen Set
(fern, maple leaf, rose, chrysanthemum)

901 Life Cycle Specimen Set
(eggs, cocoon, silkworm, moth)

Scorpion Spiders Specimen Set

902 (moss spider, house spider, funnel web spider, scorpion)

Insects Specimen Set

903 (butterfly, preying mantis, long horned beetle, rose chafer)

Sea Life Specimen Set

904 (sea horse, crab, shrimp, starfish)



Spiders and Scorpion Set, Mounted Specimen T203

Give students an up close study of these unique creatures encased in 4 clear acrylic. A practical hands on way to explore and learn!
Size: 73x41x24mm(3),76x76x24mm(1).



30-pc/box Mounted Specimen Set T206

Amazing mounted specimens set display the differences between insects and other Arthropods. With comparison card.



10-pc/box Mounted Specimen Set T209

Amazing mounted specimens set display the differences between insects and other Arthropods. With comparison card.



10-pc/box Mounted Specimen Set T210

Amazing mounted specimens set display the differences between insects and other Arthropods. With comparison card.



10-pc/box Mounted Specimen Set T211

Amazing mounted specimens set display the differences between insects and other Arthropods. With comparison card.



16-pc/box Mounted Specimen Set T204

Amazing mounted specimens set display the differences between insects and other Arthropods. With comparison card



27-pc/box Mounted Specimen Set T205

A great addition to your classroom. With excellent labeled specimens and life cycles.

Supplemental Items



Bug Viewer 1017

Rugged, clear plastic viewer with 5mm squares on the bottom for easier specimen measurement. The top has a 2.5X glass lens.



Fancy bug viewer YJ7129A

Allows students to view an object from two different angles, top and bottom, through magnifying lenses. Small objects such as insects and plants can be placed in the slide tray. Two students can view the object at the same time.



Bug viewer YJ7036C

75mm x 5X glass lens & Professional grade glass optics allow you to see the finest details. Pre-focused for quick, easy viewing.



Mini bug viewer YJ7105

19mm x 12X glass lens Professional grade glass optics allow you to see the finest details. Pre-focused for quick, easy viewing.



Fancy bug viewer YJ7129B

Crystal-clear plastic containers include a magnifying lid with air holes and a sizing grid, and fancy designed. This magnifying viewer for examining bugs, etc.



Apron - Rubberized Cloth

These aprons are made of a chemical resistant PVC coated cloth which stays flexible. There is reinforcement at the points of strain.

1050 Apron Size: 36" x 27"

1051 Apron Size: 42" x 27"

1052 Apron Size: 42" x 36"

1053 Apron Size: 46" x 36"



Disposable Petri Dish 1177P

Materials: Polynethylpentene Shatterproof and reusable. Has superior chemical resistance; resists cell adhering. Stackable for convenience.



Glass Eye Dropper 1300-4A

Glass pipette with 1 ml rubber nipple. 4" long with straight tip



Bare-Handed Microtome MS704

This unique, easy-to-use microtome features a built-in safety flange to protect fingers from cuts. Made of high quality steel materials. It is good for students in laboratory dissecting projects.



Insect Net 1402

This quality built nylon insect net features a telescoping aluminum handle that extends from 18" to 32". A simple twist of the handle locks and unlocks the handle for varying lengths. A 48" long conical net is mounted on 14" ring.



**Insect Net
502**



**Insect Net
MS705-3**



Magnifier

Plastic frame and handle, Colored

YJ7050	60mm x 6X/16mm x 10X
YJ7049	75mm x 5X/22mm x 8X
YJ7048	75mm x 4X/26mm x 8X
YJ7047	90mm x 3X/30mm x 8X



Wood Splints 2306-PK , 1000/pk

Useful for variety of general laboratory applications. Packed in bundles of 500 each, with 50 packs per case.



Wood Splints 2306-PK , 1000/pk

Useful for variety of general laboratory applications. Packed in bundles of 500 each, with 50 packs per case.



**Pinning Block
23456**

This wood pinning block has 3 steps. Excellent for mounting insects.



Pocket Loupe

YJ7058B

Pocket sized, metal frame, chrome plated, retrievable, with elegant box.

YJ7058B	12mm 20X
YJ7058-21-W1	21mm 10X
YJ7058-21-W3	21mm 30X



Magnifier

YJ7128F

Foldable black, 2 in 1

YJ7128F-75 20mm x 6X, 75mm x 2.5X

YJ7128F-100 20mm x 8X, 100mm x 2.5X

For more magnifiers, see magnifier pages in the section of Optics