

SUPER A
SCIENTIFIC

MICROSCOPE SLIDES

www.super-a-scientific.com

sales@super-a-scientific.com

Microscope Slides

Table of Contents

Color Frosted Microscope Slides.....	3
Microscope Slides and Cover Slips.....	3
Prepared Microscope Slides.....	4
Microscope Slides Storage Box	15

Microscope Slides

Color Frosted Microscope Slides



Color Frosted Microscope Slides

Coating resists most common laboratory chemicals and reagents.

Silane Coated Microscope Slides

Poly-L-Lysine Coated Adhesive Microscope Slides

Gelatin Coated Adhesive Microscope Slides

Size: 1"×3" Thickness:1.0-1.2mm

Item	Edges		Corner		Coated		
	Ground	Beveled	90°	45°	Silane	Poly-L-Lysine	Gelatin
7109-45	•			•			
7109-90	•			•			
7109-B		•		•			
7109S-45	•			•	•		
7109S-90	•		•	•	•		
7109S-B		•		•	•		
7109P-45	•			•		•	
7109P-90	•		•	•		•	
7109P-B		•		•		•	
7109G-45	•			•			•
7109G-90	•		•	•			•
7109G-B		•		•			•

Microscope Slides and Cover Slips



Plain Microscope Slides

Size 25.4mm x 76.2mm x 1.0 - 1.2mm thick

- 1305-1** Ground edges, quality: 1st class, 72pc/pk
- 1305-5** Ground edges, quality: 1st class, 12pc/pk
- 1305-12** Ground edges, quality: 2nd class, 72pc/pk
- 1305-2** Frosted one end, one side 72pc/pk
- 1305-6** Frosted one end, two sides 72pc/pk

Concavity Microscope Slides

One or two, concavity slides are 1.2-1.3mm thick, with 15mm diameter wells approximately. 0.5mm deep.

Packed 12 pcs per box with 20 boxes of 12 in a master pack.



- 1305-3** Single concavity slides, ground edges. 72pc/pk
- 1305-7** Single concavity slides, ground edges, 12pc/pk
- 1305-4** Double concavity slides, ground edges, 72pc/pk

Glass Cover-Slips

#1 Thickness, 0.13 -0.17mm



- 1305-20** 18mm x 18mm 100pc/pk
- 1305-21** 22mm x 22mm 100pc/pk
- 1305-23** 24mm x 24mm 100pc/pk
- 1305-24** 22mm x 40mm 100pc/pk
- 1305-25** 24mm x 24mm 100pc/pk
- 1305-30** 20mm x 20mm 100pc/pk
- 1305-31** 24mm x 24mm 100pc/pk
- 1305-32** 24mm x 50mm 100pc/pk
- 1305-33** 25mm x 25mm 100pc/pk

Microscope Slides

Glass Cover-Slips

#2 Thickness, 0.17 -0.25mm

1305-22 18mm x 18mm 80pc/pk

1305-26 22mm x 22mm 80pc/pk

1305-27 22mm x 40mm 80pc/pk

1305-28 24mm x 40mm 80pc/pk

1305-29 25mm x 25mm 80pc/pk

Prepare Microscope Slides



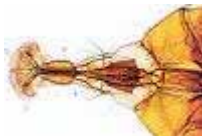
1350, 1354



1351, 1356



1352, 1355



1353

Prepared Microscope Slides, Glass

1350 Animals set, 10pcs/set

1351 Plant set, 10pcs/set

1352 Insect set, 10pc/set

1353 Amphibian and fish set, 10pc/set

Prepared Microscope Slides, Plastic

1354 Animal set, 10pc/set

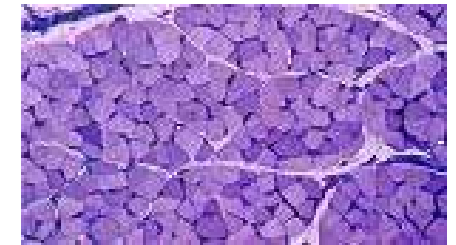
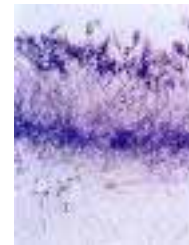
1355 Insect set, 10pc/set

1356 Plant set, 10pc/set

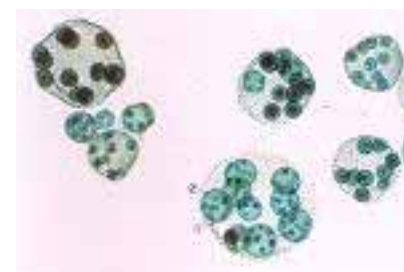
Prepared Microscope Slides, Zoology Full list on next pages



Prepared Microscope Slides, Bacteriology Full list on next pages



Prepared Microscope Slides, Pathology Full list see the next page



Microscope Slides

Phytology

ITEM	SPECIFICATIONS
A0001	ONION EPIDERMIS; WM. (BULB SCALE)
A0002	MAGNOLIA (MAGNOLIA, MAGNOLIACEAE); MACERATED WOOD, WM.
A0003	POLLEN; MIXED TYPES, WM.
A0004	LILIUM (LILY, LILIACEAE); OVARY, CS FOR ANATROPOUS OVULE.
A0005	MOSS PROTONEMA; WM.
A0006	FERN GAMETOPHYTE; WM.
A0007	FERN STEM (RHIZOME); CS.
A0008	ROOT; CS, MATURE (BUTTERCUP).
A0009	ONION ROOT TIP; LS FOR MITOSIS.
A0010	LEAF EPIDERMIS; WM. (SEDUM)
A0011	LEAF, CS.
A0012	ANTHER; CS, FOR MATURE POLLEN.
A0013	MARCHANTIA POLYMORPHA; LIFE CYCLE.
A0014	HERBACEOUS & WOODY STEMS, CS.
A0015	ZEA MAYS (INDIAN CORN, GRAMINEAE); MATURE STEM, CS.
A0016	ZEA MAYS (INDIAN CORN, GRAMINEAE); MATURE PROP ROOT, CS.
A0017	ZEA MAYS; LEAF BLADE WITH MOTOR CELLS, CS (LAMINA).
A0018	MARCHANTIA POLYMORPHA; SPOROPHYTES, LS FOR GENERAL STRUCTURE.
A0019	PINUS; LEAF, CS, TWO-NEEDLE TYPE.
A0020	TILIA AMERICANA (BASSWOOD, TILIACEAE); THREE YEAR STEM, CS.
A0021	MNIUM; LIFE CYCLE (ANTHERIDIA, ARCHEGONIA, & SPOROPHYTE LS, PLUS PROTONEMA WM)
A0022	FERN LEAFLET; WITH SORUS, LS.
A0023	EQUISETUM ARVENSE; MATURE STROBILUS, LS PLUS CS.
A0024	PINUS; OLDER STEM, CRT.

A0025	PINUS; YOUNG STEM CS, LEAF CS, MALE STROBILUS CS, & FEMALE STROBILUS CS, ON THE SAME SLIDE.
A0026	TILIA AMERICANA (BASSWOOD, TILIACEAE); ONE, TWO, & THREE YEAR STEMS, CS.
A0027	CUSCUTA (DODDER, CONVULVULACEAE); STEM & MEDIAN HAUSTORIUM, ON HOST CS.
A0028	MONOCOT & DICOT STEMS, CS.
A0029	MONOCOT & DICOT ROOTS; CS.
A0030	PRIMARY & SECONDARY ROOTS; CS.
A0031	MONOCOT & DICOT LEAVES; CS.
A0032	HYDROPHYTIC, MESOPHYTIC, & XEROPHYTIC LEAVES; CS.
A0033	DIONAEA MUSCIPULA (VENUS' FLYTRAP, DROSERACEAE); LEAF, CS FOR DIGESTIVE GLANDS.
A0034	ELODEA CANADENSIS (WATERWEED, HYDROCHARITACEAE); HYDROPHYTIC LEAF, WM.
A0035	TRADESCANTIA (SPIDERWORT, COMMELINACEAE); LEAF EPIDERMIS WITH STOMATA, WM.
A0036	OVARY TYPES; OVARIES FROM 4 DIFFERENT FLOWERS, CS SHOWING PARIETAL, AXILE, & FREE CENTRAL PLACENTATION
A0037	ANTHOCEROS; SPOROPHYTE, CS (SPORE REGION).
A0038	ANTHOCEROS; THALLUS, CS.
A0039	CONOCEPHALUM; ANTHERIDIA, LS.
A0040	CONOCEPHALUM; ARCHEGONIUM, LS.
A0041	CONOCEPHALUM; MATURE SPOROPHYTE, LS.
A0042	MARCHANTIA POLYMORPHA; ANTHERIDIUM, NEAR-MEDIAN LS (ATTACHED STALK).
A0043	MARCHANTIA POLYMORPHA; ARCHEGONIUM LS, SELECTED TO SHOW VENTER & PORTION OF NECK WITH ATTACHED STALK
A0044	MARCHANTIA POLYMORPHA; MATURE SPOROPHYTE, NEAR-MEDIAN LS (ATTACHED).
A0045	MARCHANTIA POLYMORPHA; CUPULE WITH GEMMAE, MEDIAN LS.
A0046	MARCHANTIA POLYMORPHA; GEMMAE, WM.
A0047	PELLIA EPIPHYLLA; ANTHERIDIA, LS.
A0048	PELLIA EPIPHYLLA; ARCHEGONIA, LS.
A0049	PELLIA EPIPHYLLA; MATURE DORMANT SPOROPHYTE, LS.
A0050	PELLIA EPIPHYLLA; MATURE SPOROPHYTE, SETA

Microscope Slides

	ELONGATING, LS.
A0051	BRYUM ROSEUM; LEAF, CS.
A0052	ATRICHUM (CATHARINEA); FRUITING STEM, CS.
A0053	ATRICHUM (CATHARINEA); LEAF, CS.
A0054	ATRICHUM (CATHARINEA); LEAF, WM.
A0055	MOSESSES - LEAFY BRANCH
A0056	LEUCOBRYUM; LEAVES, CS.
A0057	MNIUM; YOUNG SPOROPHYTE, CS.
A0058	MNIUM; FRUITING STEM, CS.
A0059	MOSS ANTHERIDIA; LS.
A0060	MNIUM; ARCHEGONIUM, LS, SELECTED TO SHOW EGG.
A0061	MNIUM; YOUNG SPOROPHYTE, NON-MEDIAN LS.
A0062	POGONATUM; STEM, CS.
A0063	POLYTRICHUM; LEAF, WM.
A0064	POLYTRICHUM; FRUITING STEM, CS (SETA).
A0065	POLYTRICHUM; LEAVES, CS.
A0066	POLYTRICHUM; MATURE CAPSULE, CS.
A0067	POLYTRICHUM; MATURE CAPSULE, LS.
A0068	POLYTRICHUM; ANTHERIDIA, LS.
A0069	SPHAGNUM; LEAF, CS.
A0070	SPHAGNUM; LEAF, WM.
A0071	SPHAGNUM; ANTHERIDIA, LS.
A0072	SPHAGNUM; MATURE SPOROPHYTE, LS.
A0073	EQUISETUM ARVENSE; STERILE STEM, CS.
A0074	EQUISETUM ARVENSE; STERILE STEM TIP, LS FOR GENERAL STRUCTURE & INTERCALARY MERISTEM
A0075	EQUISETUM ARVENSE; FERTILE STEM, CS.
A0076	EQUISETUM ARVENSE; RHIZOME, CS.

A0077	EQUISETUM ARVENSE; MATURE STROBILUS, CS.
A0078	EQUISETUM FLUVIATILE - UPRIGHT STEM, CS
A0079	EQUISETUM FLUVIATILE - RHIZOME, CS
A0080	EQUISETUM GIGANTEUM - UPRIGHT STEM, CS
A0081	EQUISETUM HYEMALE VAR. INTERMEDIUM; UPRIGHT STEM, CS.
A0082	EQUISETUM HYEMALE VAR. INTERMEDIUM; RHIZOME, CS.
A0083	EQUISETUM HYEMALE VAR. INTERMEDIUM; ROOT, CS.
A0084	EQUISETUM LAEVIGATUM - UPRIGHT STEM, CS
A0085	EQUISETUM LAEVIGATUM - RHIZOME, CS
A0086	EQUISETUM LITORALE - UPRIGHT STEM, CS
A0087	EQUISETUM PALUSTRE - UPRIGHT STEM, CS
A0088	EQUISETUM PALUSTRE - RHIZOME, CS
A0089	LYCOPODIUM ANNOTINUM - RHIZOME, CS
A0090	LYCOPODIUM ANNOTINUM - ROOT, CS
A0091	LYCOPODIUM ANNOTINUM - STROBILUS, CS
A0092	LYCOPODIUM CLAVATUM - RHIZOME, CS
A0093	LYCOPODIUM CLAVATUM - ROOT, CS
A0094	LYCOPODIUM CLAVATUM - STROBILUS, CS
A0095	LYCOPODIUM COMPLANATUM - RHIZOME, CS
A0096	LYCOPODIUM COMPLANATUM - ROOT, CS
A0097	LYCOPODIUM COMPLANATUM - STROBILUS, CS
A0098	LYCOPODIUM COMPLANATUM - LEAF, CS
A0099	LYCOPODIUM LUCIDULUM - GEMMA, CS
A0100	LYCOPODIUM OBSCURUM - RHIZOME, CS
A0101	LYCOPODIUM OBSCURUM - ROOT, CS
A0102	LYCOPODIUM OBSCURUM - STROBILUS, CS
A0103	LYCOPODIUM SELAGO - STEM, CS

Microscope Slides

A0104	LYCOPODIUM CLAVATUM - STROBILUS,LS
A0105	LYCOPODIUM ANNOTINUM - STROBILUS, MEDIAN LS
A0106	ADIANTUM PEDATUM; LEAFLET, CS, UNATTACHED SPORANGIA
A0107	ANGIOPTERIS ERECTA; LEAF, CS, UNATTACHED SYNANGIUM
A0108	BOTRYCHIUM; SPOANGIA, LS, UNATTACHED.
A0109	CYRTOMIUM FALCATUM; LEAF, CS, WITH SORUS LS.
A0110	DENNSTAEDTIA (DICKSONIA) PUNCTILOBULA; LEAFLET, CS, WITH SORUS, LS.
A0111	DICRANOPTERIS (GLEICHENIA); LEAFLET, CS, WITH UNATTACHED SPORANGIA.
A0112	NEPHROLEPIS; LEAFLET, CS, FOR NON-MEDIAN SORUS
A0113	WOODSIA ILVENSIS; LEAFLET, CS, WITH SORUS, LS.
A0114	JUNIPERUS VIRGINIANA (RED CEDAR); LEAF, CS.
A0115	JUNIPERUS VIRGINIANA (RED CEDAR); OLDER STEM, WITH ANNUAL RINGS, CS.
A0116	PODOCARPUS URBANII; LEAF, CS.
A0117	PODOCARPUS URBANII; OLDER STEM, CS.
A0118	PINUS; YOUNG STEM WITH UNDEVELOPED LEAVES, CS.
A0119	PINUS; MATURE ONE YEAR STEM, CS.
A0120	PINUS; OLDER STEM SHOWING ANNUAL RINGS, CS.
A0121	PINUS; ROOT, CS.
A0122	PINUS; LEAF, CS, SINGLE-NEEDLE TYPE (P. MONOPHYLLA).
A0123	PINUS BANKSIANA; LEAF, CS.
A0124	PINUS CONTORTA; LEAF, CS (2-NEEDLE TYPE).
A0125	PINUS ECHINATA; LEAF, CS (2-NEEDLE TYPE).
A0126	PINUS RESINOSA; LEAF, CS.
A0127	LILIUM MICHIGANENSE (LILY, LILIACEAE); MATURE ROOT, CS.
A0128	ANGELICA ATROPURPUREA (ANGELICA, UMBELLIFERAE); ROOT, CS.
A0129	ARCTIUM MINUS (BURDOCK, COMPOSITAE); ROOT, CS.
A0130	BETA VULGARIS (BEET, CHENOPODIACEAE); TAP ROOT, CS (BEFORE SECONDARY GROWTH).

A0131	CUCUMIS SATIVUS (CUCUMBER, CUCURBITACEAE); ROOT, CS.
A0132	CUCURBITA MAXIMA (SQUASH, CUCURBITACEAE); ROOT, CS.
A0133	DAUCUS CAROTA (CARROT, UMBELLIFERAE); TAP ROOT, CS (BEFORE SECONDARY GROWTH).
A0134	GOSSYPIUM (COTTON, MALVACEAE); ROOT, CS.
A0135	HEDERA HELIX (ENGLISH IVY, ARALIACEAE); SOIL ROOT, CS.
A0136	IPOMOEA BATATAS (SWEET POTATO, CONVULVULACEAE); ROOT, CS.
A0137	LINUM USITATISSIMUM (FLAX, LINACEAE); ROOT, CS.
A0138	LUPINUS (LUPINE, LEGUMINOSAE); MATURE ROOT, CS.
A0139	LYCOPERSICON ESCULENTUM (TOMATO, SOLANACEAE); MATURE ROOT, CS.
A0140	NICOTIANA TABACUM (TOBACCO, SOLANACEAE); ROOT, CS.
A0141	PHASEOLUS VULGARIS (BEAN, LEGUMINOSAE); MATURE ROOT, CS
A0142	PISUM SATIVUM (PEA, LEGUMINOSAE); MATURE ROOT, CS.
A0143	QUERCUS (OAK, FAGACEAE); MATURE ROOT, CS.
A0144	RAPHANUS SATIVUS (RADISH, CRUCIFERAE); TAP ROOT, CS (BEFORE SECONDARY GROWTH).
A0145	SALIX (WILLOW, SALICACEAE); YOUNG ROOT, CS.
A0146	SAMBUCUS CANADENSIS (ELDERBERRY, CAPRIFOLIACEAE); ROOT, CS.
A0147	TRIFOLIUM HYBRIDUM (ALSIKE CLOVER, LEGUMINOSAE); ROOT, CS
A0148	ASPARAGUS OFFICINALIS (ASPARAGUS, LILIACEAE); MATURE STEM WITH LIGNIFIED VESSELS, CS.
A0149	LILIUM MICHIGANENSE (LILY, LILIACEAE); STEM, CS.
A0150	BEGONIA (BEGONIA, BEGONIACEAE); STEM, CS.
A0151	BRASSICA OLERACEA (CABBAGE, CRUCIFERAE); STEM, CS.
A0152	CUCUMIS SATIVUS (CUCUMBER, CUCURBITACEAE); STEM, CS.
A0153	CUCURBITA MAXIMA (SQUASH, CUCURBITACEAE); STEM, CS.
A0154	CUCURBITA PEPO (PUMPKIN, CUCURBITACEAE); STEM, CS.
A0155	DELPHINIUM AJACIS (LARKSPUR, RANUNCULACEAE); MESOPHYTIC STEM, CS.
A0156	DIGITALIS PURPUREA (FOXGLOVE, SCROPHULARIACEAE); STEM, CS.

Microscope Slides

A0157	GOSSYPIUM (COTTON, MALVACEAE); STEM, CS.
A0158	HEDERA HELIX (ENGLISH IVY, ARALIACEAE); STEM, CS.
A0159	IPOMOEA BATATAS (SWEET POTATO, CONVULVULACEAE); STEM, CS
A0160	LINUM USITATISSIMUM (FLAX, LINACEAE); STEM, CS FOR PROTOPHLOEM (BAST) FIBERS.
A0161	LYCOPERSICUM ESCULENTUM (TOMATO, SOLANACEAE); OLDER STEM, CS.
A0162	NICOTIANA TABACUM (TOBACCO, SOLANACEAE); STEM, CS FOR PROTOPHLOEM.
A0163	PHASEOLUS VULGARIS (BEAN, LEGUMINOSAE); STEM, CS.
A0164	PISUM SATIVUM (PEA, LEGUMINOSAE); STEM, CS.
A0165	RAPHANUS SATIVUS (RADISH, CRUCIFERAE); STEM (FLORAL), CS.
A0166	TRIFOLIUM PRATENSE (RED CLOVER, LEGUMINOSAE); EARLY STEM, CS (PRIMARY XYLEM).
A0167	VITIS (GRAPE, VITACEAE); MATURE STEM (ONE YEAR OR OLDER), CS
A0168	ALLIUM CEPA (ONION, LILIACEAE); TUBULAR LEAF, CS.
A0169	TRITICUM AESTIVUM (WHEAT, GRAMINEAE); LEAF, CS.
A0170	ARCTOSTAPHYLOS UVA-URSI (BEARBERRY, ERICACEAE); LEAF, CS.
A0171	ASARUM CANADENSE (WILD GINGER, ARISTOLOCHIACEAE); LEAF, CS.
A0172	BERBERIS (BARBERRY, BERBERIDACEAE); LEAF, CS.
A0173	BRASSICA OLERACEA (CABBAGE, CRUCIFERAE); LEAF MARGIN, CS.
A0174	CANNABIS SATIVA (HEMP, CANNABINACEAE); LEAF, CS (FIBERS).
A0175	CASTANEA DENTATA (CHESTNUT, FAGACEAE); LEAF, CS.
A0176	CUCURBITA PEPO (PUMPKIN, CUCURBITACEAE); LEAF, CS.
A0177	EUCALYPTUS GLOBULUS (EUCALYPTUS, MYRTACEAE); LEAF, CS.
A0178	GOSSYPIUM (COTTON, MALVACEAE); LEAF, CS.
A0179	HEDERA HELIX (ENGLISH IVY, ARALIACEAE); LEAF, CS.
A0180	IPOMOEA BATATAS (SWEET POTATO, CONVULVULACEAE); LEAF, CS.
A0181	LYCOPERSICUM ESCULENTUM (TOMATO, SOLANACEAE); LEAF, CS.

A0182	MACLURA POMIFERA (OSAGE ORANGE, MORACEAE); LEAF, CS.
A0183	NICOTIANA TABACUM (TOBACCO, SOLANACEAE); MATURE LEAF, CS
A0184	OLEA PURPUREA (OLIVE, OLEACEAE); LEAF, CS.
A0185	PHASEOLUS VULGARIS (BEAN, LEGUMINOSAE); LEAF, CS.
A0186	PRUNUS PERSICA (PEACH, ROSACEAE); LEAF, CS.
A0187	RAPHANUS SATIVUS (RADISH, CRUCIFERAE); LEAF, CS.
A0188	RHEUM RHAPONTICUM (RHUBARB, POLYGONACEAE); LEAF, CS.
A0189	CALOPOGON PULCHELLUS (GRASS PINK, ORCHIDACEAE); FLOWER BUD, CS.
A0190	ERYTHRONIUM (DOG-TOOTH VIOLET, LILIACEAE); FLOWER BUD, CS (POLYPETALOUS COROLLA).
A0191	TRADESCANTIA OHIENSIS (SPIDERWORT, COMMELINACEAE); FLOWER BUD, CS.
A0192	BRASSICA OLERACEA (CABBAGE, CRUCIFERAE); FLOWER BUD, CS.
A0193	ASARUM CANADENSE (WILD GINGER, ARISTOLOCHIACEAE); FLOWER BUD, CS.
A0194	ASCLEPIAS TUBEROSA (BUTTERFLY WEED, ASCLEPIADACEAE); FLOWER BUD, CS FOR POLLINIUM.
A0195	CITRUS LIMONIA (LEMON, RUTACEAE); FLOWER BUD, CS.
A0196	DIGITALIS PURPUREA (FOXGLOVE, SCROPHULARIACEAE); FLOWER BUD, CS.
A0197	GAULTHERIA PROCUMBENS (WINTERGREEN, ERICACEAE); FLOWER BUD, CS.
A0198	GAYLUSSACIA (HUCKLEBERRY, ERICACEAE); FLOWER BUD, CS.
A0199	GERARDIA GRANDIFLORA (FALSE FOXGLOVE, SCROPHULARIACEAE); FLOWER BUD, CS
A0200	KALMIA POLIFOLIA (SWAMP LAUREL, ERICACEAE); FLOWER BUD, CS.
A0201	LYCOPERSICUM ESCULENTUM (TOMATO, SOLANACEAE); HYPOGYNOUS BUD, CS (FLORAL DIAGRAM).
A0202	MENYANTHES TRIFOLIATA (BUCKBEAN, GENTIANACEAE); FLOWER BUD, CS.
A0203	MITCHELLA REPENS (PARTRIDGEBERRY, RUBIACEAE); FLOWER BUD, CS.
A0204	NICOTIANA TABACUM (TOBACCO, SOLANACEAE); FLOWER BUD, CS.
A0205	PTEROSPORA ANDROMEDEA (PINE DROPS, PYROLACEAE); FLOWER BUD, CS.
A0206	PYRUS MALUS (APPLE, ROSACEAE); FLOWER BUD, CS.

Microscope Slides

A0207	RIBES AMERICANUM (WILD BLACK CURRANT, SAXIFRAGACEAE); EPIGYNOUS BUD, CS (FLORAL DIAGRAM).
A0208	SARRACENIA PURPUREA (PITCHER PLANT, SARRACENIACEAE); FLOWER BUD, CS.
A0209	TILIA AMERICANA (BASSWOOD, TILIACEAE); FLOWER BUD, CS.
A0210	VACCINIUM SP. (BLUEBERRY, ERICACEAE); FLOWER BUD, CS.
A0211	PHASEOLUS VULGARIS (BEAN, LEGUMINOSAE); POD, CS WITH ATTACHED OVULE LS.
A0212	PHASEOLUS VULGARIS (BEAN, LEGUMINOSAE); SEED, CS.
A0213	ASCLEPIAS SYRIACA (COMMON MILKWEED, ASCLEPIADACEAE); FRUIT, CS (FOLLICLE).
A0214	CAPSULE; LILY, CROSS SECTIONS OF YOUNG FRUIT
A0215	LILIUM; SEED WITH MATURE EMBRYO, CS.
A0216	TRITICUM AESTIVUM (WHEAT, GRAMINEAE); KERNEL, CS (GRAIN).
A0217	ZEA MAYS (INDIAN CORN, GRAMINEAE); KERNEL, NON-MEDIAN LS.
A0218	RAPHANUS SATIVUS (RADISH, CRUCIFERAE); FRUIT, CS (SILIQUE).
A0219	PYRUS MALUS (APPLE, ROSACEAE); FRUIT (POME), CS.
A0220	PRUNUS (PLUM, ROSACEAE); FRUIT, CS (DRUPE).
A0221	LYCOPERSICON ESCULENTUM (TOMATO, SOLANACEAE); YOUNG FRUIT, CS (BERRY).
A0222	CUCURBITA PEPO (PUMPKIN, CUCURBITACEAE); FRUIT, CS (PEPO).
A0223	CUCURBITA PEPO (PUMPKIN, CUCURBITACEAE); SEED, CS.
A0224	CITRUS LIMONIA (LEMON, RUTACEAE); FRUIT, CS (HESPERIDIUM).
A0225	RUBUS OCCIDENTALIS (BLACK RASPBERRY, ROSACEAE); FRUIT, LS.
A0226	MORUS ALBA (MULBERRY, MORACEAE); FRUIT, LS.
A0227	GAULTHERIA PROCUMBENS (WINTERGREEN, ERICACEAE); FRUIT, LS.
A0228	TILIA AMERICANA (BASSWOOD, TILIACEAE); FRUIT, CS.
A0229	SOLANUM TUBEROSUM (POTATO, SOLANACEAE); FRUIT, CS.
A0230	SECALE CEREALE (RYE, GRAMINEAE); KERNEL, CS.
A0231	BETA VULGARIS (BEET, CHENOPODIACEAE); FLESHY ROOT, CS (FOOD STORAGE, ANOMALOUS CAMBIUM).
A0232	RAPHANUS SATIVUS (RADISH, CRUCIFERAE); FLESHY ROOT, CS (FOOD STORAGE).

A0233	ASPARAGUS OFFICINALIS (ASPARAGUS, LILIACEAE); YOUNG STEM (EDIBLE STAGE), CS
A0234	SOLANUM TUBEROSUM (POTATO, SOLANACEAE); MATURE TUBER SEGMENT WITH STARCH, CS.
A0235	RHEUM RHAPONTICUM (RHUBARB, POLYGONACEAE); PETIOLE, CS.
A0236	ALLIUM CEPA (ONION, LILIACEAE); BULB (LEAVES), CS.
A0237	PHASEOLUS VULGARIS (BEAN, LEGUMINOSAE); POD, CS WITH ATTACHED OVULE LS.
A0238	CUCUMIS SATIVUS (CUCUMBER, CUCURBITACEAE); YOUNG FRUIT, CS.
A0239	PYRUS COMMUNIS (PEAR, ROSACEAE); YOUNG FRUIT, CS FOR STONE CELLS (BRACHYSCLEREIDS).
A0240	TUBER (TRUFFLE); FRUITING BODY WITH ASCI, SECTION.
A0241	LILIUM (LILY, LILIACEAE); FLOWER BUD, MEDIAN LS.
A0242	LILIUM; ENTIRE FLOWER BUD, CS, WITH ANTHERS SHOWING EARLY SPOROGENOUS TISSUE.
A0243	LILIUM; ANTHERS AT SYNIZESIS, CS.
A0244	LILIUM; ANTHERS IN EARLY PROPHASE STAGES, CS.
A0245	LILIUM; ANTHERS IN LATE PROPHASE, CS.
A0246	LILIUM; ANTHERS WITH FIRST MEIOTIC DIVISIONS, CS.
A0247	LILIUM; ANTHERS WITH SECOND MEIOTIC DIVISIONS, CS.
A0248	LILIUM; ANTHERS WITH POLLEN TETRADS, CS.
A0249	LILIUM; ANTHERS WITH ONE-CELLED MICROSPORES, CS.
A0250	ANTHER; CS, FOR MATURE POLLEN.
A0251	LILIUM; POLLINATED STIGMA & STYLE WITH POLLEN TUBES, LS.
A0252	LILIUM; OVULE WITH MEGASPOROCYTE, COMPLETE INTEGUMENTS.
A0253	LILIUM; OVULE SHOWING FIRST DIVISION.
A0254	LILIUM; OVULE SHOWING BINUCLEATE STAGE, NUCLEI IN A SERIES OF SECTIONS.
A0255	LILIUM; OVULE SHOWING SECOND DIVISION, DIVISIONS IN A SERIES OF SECTIONS.
A0256	LILIUM; OVULE SHOWING FIRST 4-NUCLEATE STAGE (MEGASPORES), NUCLEI IN A SERIES OF SECTIONS.
A0257	LILIUM; OVULE SHOWING THIRD DIVISION (FUSION OF 3 NUCLEI), DIVISIONS IN A SERIES OF SECTIONS.
A0258	LILIUM; OVULE SHOWING SECOND 4-NUCLEATE STAGE, NUCLEI IN A SERIES OF SECTIONS.

Microscope Slides

A0259	LILIUM; OVULE SHOWING FOURTH (FINAL) DIVISION, FOUR DIVISIONS IN A SERIES OF SECTIONS.
A0260	LILIUM; OVULE WITH MATURE EMBRYO SAC, NUCLEI IN A SERIES OF SECTIONS.
A0261	OVULE SHOWING THE GAMETE-FUSION IN DOUBLE FERTILIZATION
A0262	LILIUM; SECTIONS SHOWING EARLY EMBRYO, MEDIAN.
A0263	LILIUM BOOKLET; COMPLETE PICTORIAL DESCRIPTION OF MICROSPOROGENESIS & MEGASPOROGENESIS
A0264	POA PRATENSE (GRASS, GRAMINEAE); LEAVES, FOLDED & OPEN, CS (BULLIFORM OR MOTOR CELLS).
A0265	RIBES AMERICANUM (WILD BLACK CURRANT, SAXIFRAGACEAE); EPIGYNOUS BUD, MEDIAN LS.
A0266	CUCUMIS SATIVUS (CUCUMBER, CUCURBITACEAE); FEMALE FLOWER BUD, MEDIAN LS.
A0267	LYCOPERSICUM ESCULENTUM (TOMATO, SOLANACEAE); PEDICEL, LS TO DEMONSTRATE FRUIT ABSCISSION
A0268	PELARGONIUM (HOUSEHOLD GERANIUM, GERANIACEAE); YOUNG STEM, WITHOUT CORK, CS.
A0269	BRASSICA OLERACEA (CABBAGE, CRUCIFERAE); HYDATHODE, MEDIAN LS.
A0270	LYCOPERSICUM ESCULENTUM (TOMATO, SOLANACEAE); HYPOGYNOUS BUD, MEDIAN LS.
A0271	EUPHORBIA SPLENDENS (CROWN-OF-THORNS, EUPHORBIACEAE); STEM, LS FOR LATICIFEROUS TUBES.
A0272	ZAMIA FLORIDANA; MATURE EMBRYO, LS.
A0273	DIOSPYROS (PERSIMMON, EBENACEAE); PLASMODESMATA IN ENDOSPERM, SECTION.
A0274	COLEUS (COLEUS, LABIATAE); STEM TIP, CS FOR PROCAMBIUM
A0275	ALOE (ALOE, LILIACEAE); STEM, LS FOR RAPHIDES (CRYSTALS).
A0276	ZEA MAYS (INDIAN CORN, GRAMINEAE); PRIMARY ROOT TIP, CS FOR ROOT HAIRS.
A0277	LAPORTEA CANADENSIS (WOOD NETTLE, URTICACEAE); STEM, WM FOR STINGING HAIRS.
A0278	ECHINOCYSTIS LOBATA (WILD CUCUMBER, CUCURBITACEAE); TENDRIL, SECTION.
A0279	SOLANUM TUBEROSUM (POTATO, SOLANACEAE); YOUNG TUBER, CS
A0280	ULMUS AMERICANA (ELM, ULMACEAE); STEM, LS FOR NON-MEDIAN LEAF ABSCISSION.
A0281	HEDERA HELIX (ENGLISH IVY, ARALIACEAE); AERIAL ROOT, LS (STEM CS).
A0282	ACORUS CALAMUS (SWEET FLAG, ARACEAE); RHIZOME, CS (AMPHIVASAL BUNDLE).
A0283	POLYPODIUM VIRGINIANUM; RHIZOME, CS (DICTYOSTELE).

A0284	PASTINACA SATIVA (PARSNIP, UMBELLIFERAE); PETIOLE, CS.
A0285	CLIVIA (KAFIR-LILY, AMARYLLIDACEAE); LEAF, CS FOR CUTICLE
A0286	LEAF EPIDERMIS; WM. (SEDUM)
A0287	EQUISETUM ARVENSE; STERILE STEM TIP, LS FOR GENERAL STRUCTURE & INTERCALARY MERISTEM.
A0288	SOLANUM TUBEROSUM (POTATO, SOLANACEAE); MATURE STEM, CS (INTRAXYLARY PHLOEM).
A0289	QUERCUS (OAK, FAGACEAE); YOUNG STEM WITH LEAF TRACES, CS
A0290	APIUM GRAVEOLENS (CELERY, UMBELLIFERAE); SEED, CS.
A0291	ROOT; CS, MATURE (BUTTERCUP).
A0292	PHASEOLUS VULGARIS (BEAN, LEGUMINOSAE); PULVINUS, CS.
A0293	PINUS; LEAF, CS, TWO-NEEDLE TYPE.
A0294	NYMPHAEA ODORATA (WHITE WATER LILY, NYMPHAEACEAE); HYDROPHYTIC LEAF, CS, WITH LARGE STELLATE (IDIOBLASTIC) SCLEREIDS.
A0295	ISOETES (QUILLWORTS); MICROSPOROPHYLL, LS.
A0296	ORCHID (TROPICAL ORCHID, ORCHIDACEAE); ROOT, CS, SHOWING WATER-ABSORBING VELAMEN.
A0297	CUCURBITA PEPO (PUMPKIN, CUCURBITACEAE); STEM, LS FOR SIEVE TUBES (PHLOEM).
A0298	SALICORNIA (GLASSWORT, CHENOPODIACEAE); STEM, CS (XEROPHYTE, SALT MARSH).
A0299	GOODYERA (EPIPACTIS) PUBESCENS (RATTLESNAKE-PLANTAIN, ORCHIDACEAE); LEAF, CS FOR ALBESCENCE.
A0300	CYRTOMIUM FALCATUM; SPORANGIA, WM.
A0301	POLYTRICHUM; YOUNG CAPSULE, LS.
A0302	CAPSELLA BURSA-PASTORIS (SHEPHERD'S PURSE, CRUCIFERAE); FLOWER BUD, SECTION TO SHOW CAMPYLOTROPOUS OVULE.
A0303	USTILAGO MAYDIS; SMUTTED CORN KERNEL, SECTION
A0304	ABIES CONCOLOR (CONCOLOR FIR); LEAF WITH CICATRIX, LS.
A0305	COEOPTILE; SECTIONS OF YOUNG SHOOT OF ZEA SEEDLING
A0306	RICINUS COMMUNIS (CASTORBEAN, EUPHORBIACEAE); EXTRA-FLORAL NECTARY, LS (PETIOLE SECTION).
A0307	CUSCUTA (DODDER, CONVULVULACEAE); STEM & MEDIAN HAUSTORIUM, ON HOST CS.
A0308	SELAGINELLA (SPIKE MOSS); STROBILUS, LS SHOWING MEGASPORES & MICROSPORES IN UNATTACHED SPORANGIA.
A0309	PINUS; FEMALE STROBILUS, LS, SELECTED TO SHOW OVULE WITH MICROPYLE.

Microscope Slides

A0310	PINUS; ROOT, CS FOR ECTOTROPHIC MYCORRHIZA
A0311	CORALLORHIZA STRIATA (CORALROOT, ORCHIDACEAE); RHIZOME WITH ENDOTROPHIC MYCORRHIZA, CS
A0312	TRADESCANTIA OHIENSIS (SPIDERWORT, COMMELINACEAE); FLOWER BUD OR OVARY, SECTION FOR ORTHOTROPOUS OVULE.
A0313	ALLIUM CEPA (ONION, LILIACEAE); MITOCHONDRIA IN ROOT TIP, LS.
A0314	HABENARIA (FRINGED ORCHIS, ORCHIDACEAE); FLOWER BUD, LS FOR "PROCHROMOSOMES".
A0315	VICIA FABA (BROAD BEAN, LEGUMINOSAE); ROOT TIP SQUASH, FOR MITOSIS.
A0316	VICIA FABA (BROAD BEAN, LEGUMINOSAE); ROOT TIP SQUASH, MITOSIS CHEMICALLY ARRESTED AT METAPHASE, FEULGEN STAIN.
A0317	PINUS; MALE STROBILUS WITH POLLEN, CS.
A0318	ALLIUM CEPA (ONION, LILIACEAE); MITOCHONDRIA IN ROOT TIP, LS.
A0319	CHLOROPLASTS & DEVELOPING STARCH; IN DICOT LEAF, CS
A0320	RHAPHIDES; IN ALOE STEM OR LEAF, LS

Plant Pathology

ITEM	DESCRIPTION
C0001	PUCCINIA GRAMINIS (WHEAT RUST); UREDINIA, TELIA, AECIA & SPERMOGONIA ON THE SAME SLIDE, SECTIONS.
C0002	PUCCINIA GRAMINIS (WHEAT RUST); UREDINIA ON TRITICUM LEAF OR STEM, SECTION.
C0003	PHYTOPHTHORA INFESTANS (LATE BLIGHT OF POTATO); IN LYCOPERSICUM FRUIT, SECTION.
C0004	ALBUGO PORTULACAE; ON PORTULACA, SECTION.
C0005	PERONOSPORA PARASITICA; HAUSTORIA & SPORANGIOPHORES ON CAPSELLA STEM, SECTION.
C0006	VENTURIA INAEQUALIS (APPLE SCAB); ASCOCARP, NON-MEDIAN LS.
C0007	EPICHLOE TYPHINA; ASCIGEROUS STROMA ON GRASS LEAF, SECTION.
C0008	ERYSIPHE POLYGONI; CLEISTOTHECIA ON POLYGONUM LEAF, SECTION.
C0009	WOOD ROT FUNGUS; ROTTING WOOD, CS, SHOWING ADVANCEMENT OF FUNGUS.
C0010	FUSARIUM OXYSPORUM F. CONGLUTINANS; HYPHAE IN VESSELS OF CABBAGE STEM OR PETIOLE, SECTION
C0011	COLLETOTRICHUM LAGENARIUM; ON CITRULLUS, SECTION.
C0012	SEPTORIA APII (CELERY LATE BLIGHT); PYCNIDIA, SECTION
C0013	PLASMIDIOPHORA BRASSICAE; PLASMODIA & SPORES IN CABBAGE CLUB ROOT, CS.
C0014	SYNCHYTRIUM DECIPIENS; UNICELLULAR SORUS IN AMPHICARPA, SECTION.
C0015	BEAN BLIGHT (XANTHOMONAS PHASEOLI); POD LESIONS, SECTION.
C0016	SOFT ROT (ERWINIA CAROTOVORA); LESIONS IN CARROT ROOT OR CABBAGE LEAF, SECTION.
C0017	ERYSIPHE AGGREGATA; CLEISTOTHECIA ON ALDER CATKIN, SECTION.
C0018	USTILAGO MAYDIS; SMUTTED CORN KERNEL, SECTION.
C0019	THIELAVIOPSIS BASICOLA (BLACK ROOT ROT OF TOBACCO); SPORULATING MYCELIUM FROM CULTURE, WM
C0020	MONILINIA (SCLEROTINIA) FRUCTICOLA (PLUM BROWN ROT); CONIDIAL LESIONS ON PLUM FRUIT, SECTION

Microscope Slides

ITEM	DESCRIPTION
C0021	UROCYSTIS CEPULAE; SMUT LESIONS ON ONION, SECTION.
C0022	GYMNOSPORANGIUM JUNIPERIVIRGINIANAE (APPLE RUST); AECIA ON APPLE LEAF, LS.
C0023	MYCOSPHAERELIA BRASSICICOLA; ON BRASSICA, SECTION.
C0024	SOFT ROT (ERWINIA CAROTOVORA); LESIONS IN CARROT ROOT OR CABBAGE LEAF, SECTION
C0025	ALTERNARIA (MACROSPORIUM) SOLANI; CONIDIAL LESIONS ON TOMATO FRUIT, SECTION.
C0026	PHYTOPHTHORA INFESTANS (LATE BLIGHT OF POTATO); SPORAGIOPHORES ON LEAF, SECTION.
C0027	POTATO MOSAIC; INFECTED LEAF, SECTION.
C0028	SPONGOSPORA SUBTERRANEA; SPORE BALLS IN POTATO TUBER, SECTION
C0029	GLOMERELLA CINGULATA; ASCIGEROUS STROMA, SECTION
C0030	APPLE BITTER PIT; FRUIT LESIONS (PHYSIOLOGICAL), SECTION.
C0031	GYMNOSPORANGIUM JUNIPERIVIRGINIANAE (APPLE RUST); AECIA ON APPLE LEAF, LS.
C0032	VENTURIA INAEQUALIS (APPLE SCAB); CONIDIAL LESION ON APPLE FRUIT, SECTION.
C0033	CERCOSPORA ROSICOLA; ON ROSA, SECTION.
C0034	PUCCINIA DISPERSA; ON SECALE, SECTION.
C0035	CUCUMBER DOWNY MILDEW
C0036	CUCUMBER POWDERY MILDEW
C0037	WATERMELON ANTHRACNOSE
C0038	RADISH SOFT ROT
C0039	GLOEOSPORIUM MUSARUM COOKE ET MASS.
C0040	SPHACELOMA FAWCETTI JENK
C0041	ALTERNARIA CITRI ELLIS ET PIERCE
C0042	CONIOTHYRIUM DIPLODIELLA (SPEG.) SACC.
C0043	PHYLLOSTICTA ERIOBOTRYAE THUEM
C0044	PSEUDOPERONOSPORA LITCHI
C0045	ORYZA SATIVA BLAST
C0046	TRITICUM AESTIVUM RUST
C0047	IPOMOEA BATATAS SCAB
C0048	TRITICUM AESTIVUM RUST DUSTBRAND

Part of zoology

ITEM	DESCRIPTION
B0001	AMOEBIA PROTEUS; WM.
B0002	PARAMECIUM CAUDATUM; WM.
B0003	ZOOPLANKTON; WM, MIXED SPECIES.
B0004	SPONGE, SPICULES; WM CONTAINING SEVERAL TYPES OF CALCAREOUS & SILICEOUS SPICULES
B0005	FRUIT FLY (DROSOPHILA); WM.
B0006	FROG BLOOD; SMEAR.
B0007	SPONGE; CS & LS.
B0008	HYDRA; WM.
B0009	PLANARIA; WM, INJECTED.
B0010	EARTHWORM; CS.
B0011	INSECT; WINGS (4 TYPES), WM.
B0012	INSECT CORNEA; WM. (TABANUS)
B0013	DROSOPHILA; FEMALE, WM.
B0014	AMPHIOXUS; WM.
B0015	EMBRYO CELLS; ANIMAL; WHITEFISH BLASTODISC SHOWING MITOSIS, SECTION.
B0016	FROG INTESTINE; CS.
B0017	EUGLENA; WM.
B0018	PLANARIA; CS, THREE REGIONS.
B0019	EARTHWORM (LUMBRICUS TERRESTRIS); PARASAGITTAL SECTION THROUGH THE LUS ANTERIOR END, SHOWING CROP, GIZZARD, & SEMINAL VESICLES, PLUS OTHER STRUCTURES
B0020	STARFISH; RAY, CS, SHOWING THE DIGESTIVE GLAND.
B0021	INSECT; LEGS (4 TYPES), WM. WALKING, DIGGING, SWIMMING, & HOPPING.
B0022	INSECT; SPIRACLE, WM.

Microscope Slides

B0023	FROG; LIVER, CS.
B0024	FROG TESTIS; SECTION.
B0025	BIRD; FEATHERS, 3 TYPES, WM.
B0026	OVARY; SELECTED TO SHOW MATURING FOLLICLE WITH OVUM & CUMULUS OOPHORUS, SECTION
B0027	SQUAMOUS EPITHELIUM; KIDNEY (BOWMAN'S CAPSULE), SECTION.
B0028	CILIATED COLUMNAR EPITHELIUM; SECTION.
B0029	TRANSITIONAL EPITHELIUM; URETER OR BLADDER, SECTION.
B0030	CARTILAGE; HYALINE, SECTION.
B0031	DEVELOPING CARTILAGE BONE; SHOWS OSTEOBLASTS, OSTEOCLASTS, BONY SPICULES, PRIMARY MARROW & RESORBING CARTILAGE, LS
B0032	STRIATED MUSCLE; THIN SECTIONS SPECIFICALLY STAINED TO SHOW THE STRIATIONS
B0033	MAMMALIAN MUSCLE, 3 TYPES; SECTIONS OF SMOOTH, STRIATED, & CARDIAC.
B0034	SPINAL CORD; CS.
B0035	ARTERY, VEIN & NERVE; SECTION.
B0036	SPLEEN; SECTION.
B0037	SKIN; SECTION WITH HAIR FOLLICLES CUT LONGITUDINALLY.
B0038	SALIVARY GLANDS; LINGUAL, SECTION. SHOWS BOTH SEROUS & MUCOUS GLANDS.
B0039	STOMACH; FUNDIC REGION, SECTION.
B0040	DUODENUM, JEJUNUM, & ILEUM; CS.
B0041	PANCREAS; SECTION.
B0042	LIVER; NORMAL MAMMALIAN, SECTION
B0043	TESTIS; STAINED WITH IRON HEMATOXYLIN TO ILLUSTRATE SPERMATOGENESIS & SPERMIOGENESIS, SECTION
B0044	PARATHYROID & THYROID; SECTION.
B0045	SUPRARENAL (ADRENAL); SECTION.

B0046	CHAETOPHORA; BRANCHING FILAMENTS ENVELOPED IN AN EXCEEDINGLY TOUGH GELATINOUS MATRIX, WM
B0047	DROSOPHILA; CHROMOSOMES. LARVAL SALIVARY GLAND SMEAR WHICH PORTRAYS GIANT CHROMOSOMES WITH THEIR CHARACTERISTIC BANDING
B0048	CHROMOSOMES WITH THEIR CHARACTERISTIC BANDING
B0049	GRASSHOPPER TESTIS; SECTION.
B0050	SPERM; BULL, SMEAR.
B0051	STRATIFIED CILIATED COLUMNAR EPITHELIUM; SECTION OF FROG ESOPHAGUS OR ORAL MUCOSA.
B0052	MITOCHONDRIA; TURTLE LIVER, SECTION.
B0053	GOLGI APPARATUS; SPECIAL SILVER PREPARATION OF MAMMALIAN OR AMPHIBIAN PANCREAS,
B0054	MOTOR NERVE CELLS; NISSL STAIN, SMEAR.
B0055	AMPHIUMA; (LARGE DISTINCT CELLS) INTESTINE, SMALL, CS.
B0056	SCYPHA (GRANTIA); CS SHOWING CANAL SYSTEM & ARRANGEMENT OF CHOANOCYTES.
B0057	HYDRA; NEAR-MEDIAN LS THROUGH HYPOSTOME & FOOT.
B0058	EMBRYO CELLS; ANIMAL; WHITEFISH BLASTODISC SHOWING MITOSIS, SECTION. (11-5)
B0059	STRATIFIED SQUAMOUS EPITHELIUM; FROG SKIN, SECTION.
B0060	CILIATED COLUMNAR EPITHELIUM; SECTION.
B0061	LIVER; NORMAL MAMMALIAN, SECTION.
B0062	TESTIS; STAINED WITH IRON HEMATOXYLIN TO ILLUSTRATE SPERMATOGENESIS & SPERMIOGENESIS, SECTION
B0063	THYROID; SECTION.
B0064	PARAMECIUM; FISSION, WM.
B0065	PARAMECIUM; CONJUGATIN, WM.
B0066	STARFISH; YOUNG, WM.
B0067	CRAYFISH; GILL, SECTION.
B0068	MOSQUITO (CULEX); HEADS, WM FROM MALE & FEMALE.
B0069	FLEA; WM.

Microscope Slides

B0070	AMPHIUMA; (LARGE DISTINCT CELLS) EPITHELIUM, 3 TYPES, SECTION.
B0071	MOTOR NERVE CELLS; FROM VENTRAL HORN OF OX SPINAL CORD, SMEAR.
B0072	HYDRA; CS & LS.
B0073	OBELIA; PORTION OF COLONY SHOWING VEGETATIVE & REPRODUCTIVE POLYPS, WM.
B0074	NEANTHES (NEREIS); PARAPODIUM, WM.
B0075	SNAIL; RADULA, WM.
B0076	INSECT; LEGS (4 TYPES), WM. WALKING, DIGGING, SWIMMING, & HOPPING.
B0077	HONEY BEE; MOUTH PARTS, WM. INSECT; ANTENNAE (7 TYPES), WM. CLAVATE, PLUMOSE, LAMELLATE, SERRATE OR PECTINATE,
B0078	MONILIFORM, GENICULATE, & ARISTATE
B0079	INSECT; RADIAL SECTION OF COMPOUND EYE.
B0080	GRASSHOPPER; HEAD, WM SHOWING MOUTH PARTS.
B0081	TERMITE; WORKER, WM.
B0082	TERMITE; SOLDIER, WM.
B0083	HUMAN LOUSE (PEDICULUS HUMANIS); MALE, WM.
B0084	HUMAN LOUSE (PEDICULUS HUMANIS); FEMALE, WM.
B0085	BUTTERFLY; PROBOSCIS, WM.
B0086	DROSOPHILA; MALE & FEMALE, WM.
B0087	HOUSEFLY; HEAD, LEG, & WING, WM.
B0088	MOSQUITO (CULEX); LARVA, WM.
B0089	MOSQUITO (CULEX); PUPA, WM.
B0090	HONEY BEE; LEGS, WM OF 1ST, 2ND, & 3RD LEGS.
B0091	HONEY BEE; STING & POISON SAC, WM. WEEVIL; WM.

Bacteriology

ITEM	SPECIFICATIONS
D0001	BACTERIA, 3 TYPES; WM, SEPARATE SMEARS, ROUTINE STAIN.
D0002	BACTERIA, 3 FORMS MIXED; COCCI, BACILLI, SPIRILLAE; GRAM STAIN.
D0003	COCCUS; GRAM-NEGATIVE.
D0004	BACILLUS; GRAM-NEGATIVE.
D0005	FLAGELLAE; POLAR FLAGELLAE, SPIRILLUM VOLUTANS.
D0006	FLAGELLAE; POLAR FLAGELLAE, PSEUDOMONAS AERUGINOSA.
D0007	FLAGELLAE; PERITRICHOUS FLAGELLAE, PROTEUS VULGARIS.
D0008	MOUTH (ORAL) SMEAR; MIXED BACTERIA FROM NORMAL HEALTHY MOUTH, GRAM STAIN.
D0009	RECTAL SMEAR; MIXED BACTERIA FROM NORMAL GASTROINTESTINAL TRACT, GRAM STAIN.
D0010	MYCOBACTERIUM SMEGMATIS; SMEAR FROM CULTURE, ACID FAST STAIN.
D0011	ESCHERICHIA COLI; (SOMETIMES PATHOGENIC), SMEAR FROM CULTURE.
D0012	STREPTOCOCCUS LACTIS; SMEAR FROM CULTURE.
D0013	AZOTOBACTER CHROOCOCCUM (LARGE NITROGEN-FIXING SOIL BACILLUS); SMEAR FROM CULTURE

Slides Storage Box



Staining Glass Dish W/Cover for 20S

200-003, - 004, -005, -006

High-quality dishes for easy staining! These staining dishes holds standard 1" x 3" microscope slides. The jars are made from thick annealed glass with slots molded into the glass. Each slot is designed to hold two slides back to back.



Plastic Slides Storage Box

SB0006 Holding 6 slides

SB0010 Hlding 10 slides

SB0015 Holding 15 slides

SB0025 Holding 25 slides

SB0050 Holding 50 slides

SB0060 Holding 60 slides

SB0100 Holding 100 slides

